



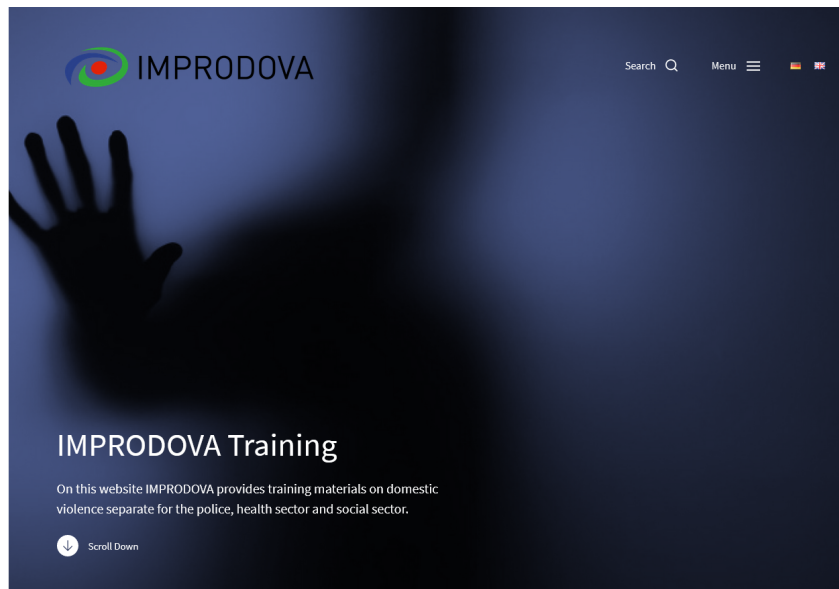
Teaching formats using the IMPRODOVA Platform

M.A. Paulina Juszczuk

University of Münster, Germany (WWU)

June 9th, 2021, online

IMPRODOVA Training Platform

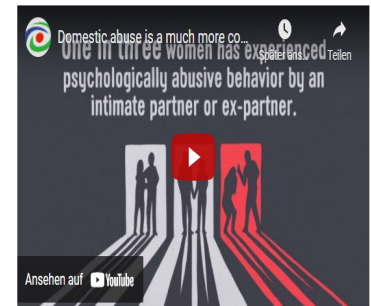


<https://training.improdova.eu>

Welcome to the international site of the

training platform of the EU project [IMPRODOVA](https://training.improdova.eu).

IMPRODOVA is a research and innovation project concerning human factors shaping responses to domestic violence, a behavior causing physical, sexual or psychological harm, including physical aggression, sexual coercion, psychological abuse and controlling behavior. IMPRODOVA's operational definition of high impact domestic violence (HIDV) is serious violence within the family, against children, spouses and elderly family members. Seriousness can be intensity, duration and consequences of violence. Further information and how to contact us can be found [here](#).



Find more information here: [IMPRODOVA Flyer](#).

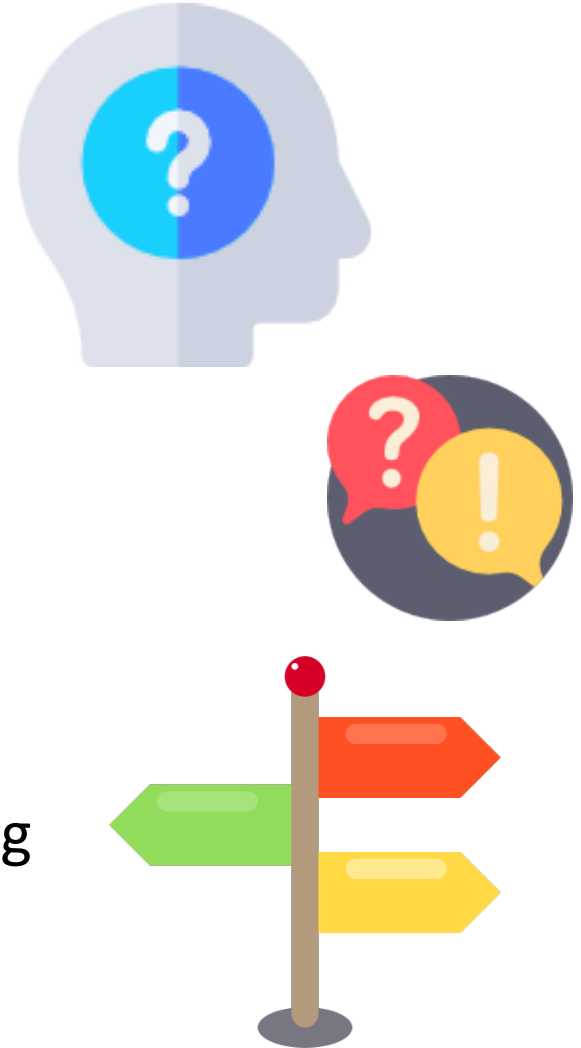
What articles are new on this training platform?

- Domestic violence in the media
- Domestic violence in times of COVID-19
- Domestic violence in the school sector

Domestic abuse is a much more common problem in our society than many of us think it would be.

Training materials

- Education and training in the field of domestic violence
- Workshop and student courses
- Risk Assessment Instruments
- Ficts and Facts
- Training videos
- Factsheets
- Presentation for workshops
- Case studies and scenario-based learning
- Knowledge Assessments



Workshop and student courses

Workshop and student courses

► I. 45-minute workshop for physicians

► II. 90-minute workshop for medical schools

► III. Student course for medical schools



Home assignment

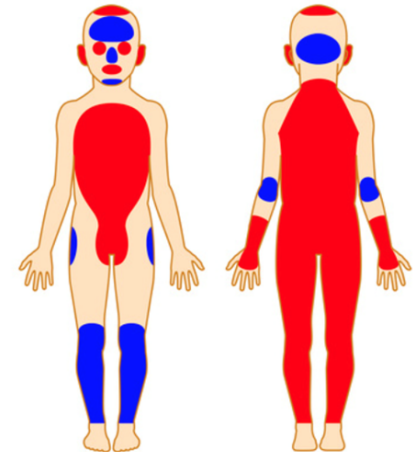
Download

Concept: 90-minute workshop for medical schools

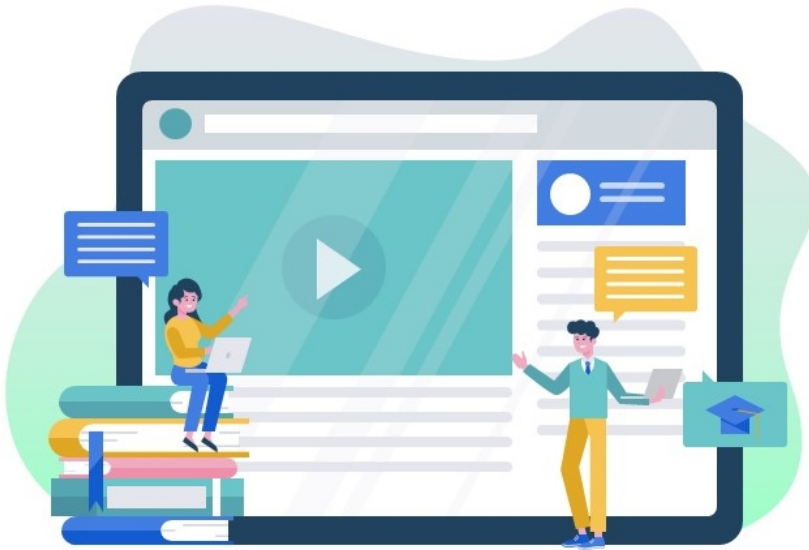
Download

Concept: Student course for medical schools

Download



Elective course on domestic violence at the medical faculty in Münster



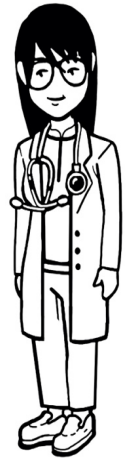
**Domestic violence in an
International Context
WS 2020/2021**

**This year we already
have our third course!**

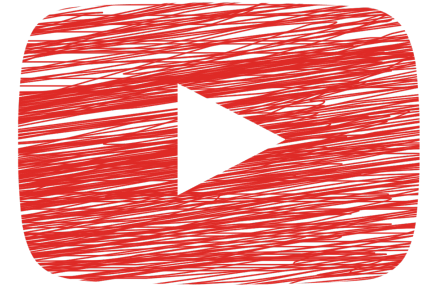
 **medizinische fakultät**
Westfälische
Wilhelms-Universität Münster

 **ARBEITSGRUPPE**
COGNITION & GENDER

Design of new pictures for training videos



Training videos



- Domestic violence in health services
- How to respond to a disclosure
- What happens when you call the police?
- What happens when you contact a women's shelter?
- Who are the perpetrators of domestic violence?
- Who is affected by domestic violence?
- Why is cooperation in cases of domestic violence important?
- Domestic violence in times of disasters
- The UN and its role in combating violence against women
- How to document domestic violence in the Health Sector

Why is cooperation in cases of domestic violence important?



Factsheets



- **Police as frontline responder in cases of domestic violence (Introduction)**
- **Domestic violence in the Health Sector (Introduction)**
- **Social Services as frontline responder in cases of domestic violence (Introduction)**
- Forms and Dynamics of Domestic Violence (Module 1)
- Gender-Based Violence (Module 1)
- Indicators of Domestic Violence (Module 2)
- **Radiological Findings (Module 2)**
- Communication with victims of domestic violence (Module 3)
- **Police Investigation and Legal Proceedings (Module 4)**
- **Documentation in cases of domestic violence (Module 4)**
- **Support Services of the Social Sector (Module 4)**
- Risk Assessment and Safety Planning (Module 5)
- Istanbul Convention (Module 6)
- Cooperation in multiprofessional teams (Module 7)

Risk Assessment Integration Module (RAIMO)

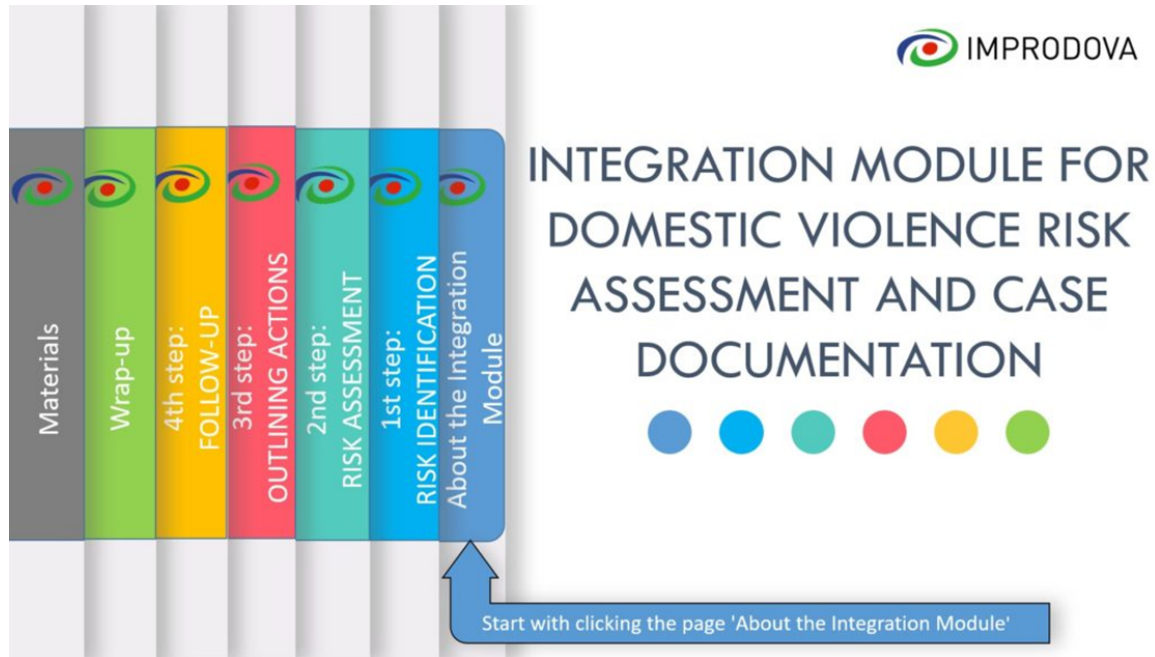


Photo by **Andrea Piacquadio** from **Pexels**

Ficts and Facts



- Myths surrounding domestic violence
- Make it difficult for the person experiencing abuse to seek help and make it difficult for others to understand it
- Shift responsibility for abuse on to the victim or an outside factor

Domestic violence is caused by using drugs and alcohol.

Domestic violence is a private matter.

Domestic violence does not impact on children. They do not remember it. They are too young to know what is going on.

Domestic violence affects only a small number of women.

Most rapes are committed by strangers who attack women at night on the streets.

A pregnant woman is at an even greater risk of physical abuse.

Knowledge Assessments



- Forms of domestic violence
- Gender-based violence
- Impact of domestic violence
- Communication with victims of domestic violence
- Risk Assessment and Safety Planning
- International Standards and legal frameworks in Europe
- Inter-Agency Cooperation

Based on the Istanbul Convention, states are required to take steps to prevent, investigate and prosecute cases of domestic violence.

☒ True ☐ False

You got 1 of 1 points

1/1

What should one be aware of when talking to victims of domestic violence from refugee and migrant communities?

✓ Fear of authorities may make the victim reluctant to involve the police or state services. (+1)

✓ There are differences between the legal and support systems in different countries. (+1)

Domestic violence is only physical violence.

✓ Everyone has the right to feel safe at home. (+1)

3/3





[@improdova](https://twitter.com/improdova)



[IMPRODOVA.eu](https://www.improdova.eu)



[IMPRODOVA project](https://www.linkedin.com/company/improdova-project)



[IMPRODOVA](https://www.researchgate.net/publication/331111111)



[Project IMPRODOVA](https://www.youtube.com/watch?v=...)



This project has received funding from the European Union's Horizon 2020 research and innovation programme under grant agreement No 787054.

www.improdova.eu